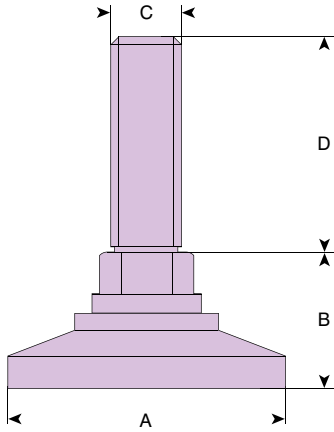


## AF | R | RIGID DESIGN

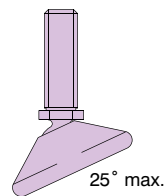
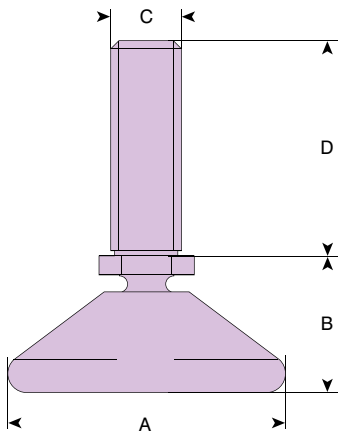
SUITABLE FOR USE WITH AFS SERIES SOCKETS



A	B	C	D	load capacity	reference
30	19	M10	45	1000	<b>AFR 30 M10X45</b>
40	19	M10	45	1000	<b>AFR 40 M10X45</b>
50	19	M10	45	1000	<b>AFR 50 M10X45</b>

## AF | T | TILTING DESIGN

SUITABLE FOR USE WITH AFS SERIES SOCKETS



A	B	C	D	load capacity	reference
32	20	M8	25	75	<b>AFT 32 M8X25</b>
40	20	M10	37	100	<b>AFT 40 M10X37</b>
55	20	M10	50	250	<b>AFT 55 M10X50</b>

**i** All dimensions are in **mm** and all loadings are in **kg** unless otherwise stated